

Argyll and Bute Council
Comhairle Earra Ghaidheal agus Bhoid

Customer Services
Executive Director: Douglas Hendry



Kilmory, Lochgilphead, PA31 8RT
Tel: 01546 602127 Fax: 01546 604444
DX 599700 LOCHGILPHEAD
e.mail –douglas.hendry@argyll-bute.gov.uk

15 February 2012

NOTICE OF MEETING

A meeting of the **MID ARGYLL, KINTYRE AND THE ISLANDS LOCAL AREA COMMUNITY PLANNING GROUP** will be held in the **COUNCIL CHAMBERS, TOWN HALL, CAMPBELTOWN** on **WEDNESDAY, 7 MARCH 2012 at 10:30 AM**, which you are requested to attend.

Douglas Hendry
Executive Director - Customer Services

BUSINESS

1. **APOLOGIES**
2. **MINUTES OF THE PREVIOUS MEETINGS HELD ON 11 JANUARY 2012 AND 1 FEBRUARY 2012**(Pages 1 - 12)
3. **DECLARATIONS OF INTEREST**
4. **MINUTES OF MEETINGS**
An update by Charles Reppke, Head of Governance and Law.
5. **UPDATES FROM PARTNERS**
 - (a) NHS Highland - Getting it Right for Community Care in Argyll & Bute / Reshaping Older Peoples Services
A presentation by Christina West, Locality Manager – Mid Argyll, Kintyre and Islay.
 - (b) Provision of a GP - Bowmore and Jura/ suitable premises
An update by Christina West, Locality Manager – Mid Argyll, Kintyre and Islay.
 - (c) Social Work issues
An update by Rod Clayton, Area Manager – MAKI.

(d) Red Cross - update by Robert Colburn.

(e) Strathclyde Fire and Rescue Service - Home Fire Safety visits

6. **AREA COMMUNITY SCORECARDS**
7. **REVISED SINGLE OUTCOME AGREEMENT/COMMUNITY PLAN**
8. **RATIONALISATION/ PARTNERSHIP LINKS TO LOCAL AREA COMMUNITY PLANNING GROUP**(Pages 13 - 20)
9. **CONSULTATION DIARY - ARGYLL AND BUTE COUNCIL, IMPROVEMENT AND STRATEGIC HR**(Pages 21 - 26)
10. **SELF-ASSESSMENT OUTCOME - JANE FOWLER**
11. **UPDATES FROM THEMATIC GROUPS**
12. **DATES FOR RESCHEDULED MAY LACPG**

MID ARGYLL, KINTYRE AND THE ISLANDS LOCAL AREA COMMUNITY PLANNING GROUP

Councillor Donald MacMillan (Chair) Councillor Rory Colville (Vice-Chair)

Shirley MacLeod – Area Governance Manager

Contact: Theresa McLetchie - Tel: 01546 604511

**MINUTES of MEETING of MID ARGYLL, KINTYRE AND THE ISLANDS LOCAL AREA
COMMUNITY PLANNING GROUP held in the COUNCIL CHAMBERS, KILMORY,
LOCHGILPHEAD, PA31 8RT
on WEDNESDAY, 11 JANUARY 2012**

Present:

(Chair)

Councillor Donald MacMillan

Councillor Rory Colville

Councillor Alison Hay

Charles Reppke

Eileen Wilson

Audrey Baird

Bob Chicken

Liz Ball

Bob Millar

Jeanette Laughton

Stewart Farmer

Andy McClure

Rod Buchanan

Councillor Robin Currie

Councillor Donald Kelly

Head of Governance and Law

Community Planning Officer

Community Development

Officer

Tarbert & Skipness CC

West Kintyre CC

Lochgilphead CC

Ardrishaig CC

Federation of Small

Businesses

Strathclyde Fire & Rescue

ACHA

Campbeltown

Maryanne Stewart

Pat Dean

Susan Paterson

AVA

AVA

KFCC, KPPF

Islay

Lesley Anderson

Hamish Campbell

IJCVS

IJCVS

1. APOLOGIES

Apologies were received from:

Councillor Anne Horn

Councillor John Semple

Councillor Douglas Philand

Councillor John McAlpine

Chief Insoector Marlene Baillie, Strathclyde Police

Yvonne Litster, ACHA

Christina West, NHS Highland

Kate Macaulay, NHS Highland

Diane Clark, Colonsay CC

Mary McGugan, West Lochfyne CC

Leonard McNeill, West Lochfyne CC

Andrea Henderson, Furnace CC

The Chair welcomed everyone to the first LACPG meeting of 2012 and introductions were made around the table.

2. MINUTES OF THE PREVIOUS MEETING HELD ON 2 NOVEMBER 2011

The Minute of the previous meeting was approved as a true and correct record.

3. DECLARATIONS OF INTEREST

There were no Declarations of Interest.

4. UPDATES FROM PARTNERS

The Chair invited updates from partners attending the meeting.

Lochgilphead CC

Bob Millar reported on various paths in Lochgilphead which had not been properly maintained and were in a dreadful state of repair.

Ardrishaig CC

Jeanette Laughton informed the meeting of a blocked drain in Ardrishaig which Scottish Water had still, as yet, to repair.

West Kintyre CC

Liz Ball highlighted the damage on the road verges which had resulted from the recent storm and the detriment to the road drainage system. She enquired if Argyll and Bute council had plans for a clear-up operation. Charles Reppke replied that some clearance had been undertaken to remove debris on the roadway. However he would escalate Liz's enquiry to Jim Smith, Head of Roads and report back.

Tarbert and Skipness CC

Bob Chicken reported that the community council had received an emergency procedure paper. He would ascertain who had forwarded on the paper and advise Charles Reppke accordingly. Charles Reppke informed the group that in the recent severe weather, Bute had proven a good example of partnership working. Whereby, Argyll and Bute council with relevant partners and community groups had set up a rest centre to provide help and assistance to people affected by power outages.

Councillor Hay enquired if Argyll and Bute council would review their own procedures in dealing with emergencies. Charles replied that Argyll and Bute council had their own structured approach and had liaised and supported the lead agencies, namely the Hydro Board for restoring power supplies and police in coordinating. Other partners fed into this support mechanism. Rod Buchanan advised that ACHA had compiled a list of vulnerable tenants after the previous 2 years of severe weather.

Councillor Currie commended the work undertaken by the SSE in restoring power after the storm. However, he questioned if there was something inferior in the Argyll and Bute power network which might necessitate an upgrade. Charles replied that unfortunately trees had resulted in most of the damage in Argyll and Bute and the topography was partly consequential to this.

Eileen Wilson reported on exercises recently undertaken at the Clyde Centre in Helensburgh with various other agencies. These had been instigated after the 2 previous severe winters. She reiterated the need and importance for local community resilience to combat severe weather and power outages. Susan Paterson stated that the Emergency Planning team might need to update information they held in regards local venue/community support, etc.

Hamish Campbell suggested that Emergency Planning be routinely on the LACPG Agenda advising on the role of agencies and other relevant issues. Charles reported that Argyll and Bute council routinely convened meetings with council officers to discuss Emergency Planning issues. He stated that the LACPG would be advised on the debriefing conducted by Argyll and Bute council after the recent storm at a future meeting, probably in the summer..

Audrey Baird informed the group that Community groups and organisations are being encouraged to apply now for Argyll and Bute Council's 2012 Third Sector Grants. The closing date for completed applications is **Friday 24 February**. Central applications for organisations delivering a service Argyll and Bute wide will be considered by the Executive in **June 2012**.

The applications forms for 2012 are available at local area community learning offices or can be accessed using the following link

<http://www.argyll-bute.gov.uk/council-and-government/third-sector-grants>

Pat Dean gave a short update on a new initiative – Influence and Change. She advised that the synopsis would be emailed to Theresa McLetchie who would disseminate it out to meeting attendees.

4. AREA SCORECARDS

This would be discussed at a future meeting.

5. REVISED SINGLE OUTCOME AGREEMENT/COMMUNITY PLAN

Eileen Wilson advised the group that this was a draft plan. She requested that any comments be sent directly to her and she would take these to the next Management Committee meeting.

Eileen's contact details are:-

Eileen.wilson@argyll-bute.gov.uk

6. HIGHLIGHT/EXCEPTION REPORTING - ARGYLL AND BUTE COUNCIL - IMPROVEMENT AND STRATEGIC HR AND GOVERNANCE AND LAW

Charles Reppke advised that this would be a regular Agenda item. The ethos was that local groups or agencies would advise the LACPG if their contribution to the Local Area Community Plan are not being completed effectively and also to report on exceptionally good progress, etc. This would afford communities the avenue to raise issues to a more strategic level.

The LACPG would agree priorities to be delivered and also monitor progress on their local area community plan.

Eileen Wilson advised that the MAKI LACPG could forward concerns to Thematic groups. Bob Chicken enquired on the role and remit of Thematic groups. Eileen replied that the Thematic groups were in place to ensure that the Community Plan was delivered.

7. RATIONALISATION/ PARTNERSHIP LINKS TO LOCAL AREA COMMUNITY PLANNING GROUP

Charles Reppke advised the group that any incorrect/out-of-date information should be notified to Theresa McLetchie.

He welcomed the attendance of Stewart Farmer (Federation of Small Businesses) at the meeting and stated that this should prove an excellent opportunity to involve a business element to both the MAKI LACPG and other LACPGs in Argyll and Bute.

Councillor Colville and Councillor Currie raised concerns regarding Islay and the other islands. Their feeling was that the islands were not fully represented. Charles Reppke replied that he understood their point. However, he reiterated the need for Community Councils to come together on key points, share information and the merits of trying to work together. Audrey Baird voiced her concerns in regards the islands. She informed the group about Diageo which tried to facilitate the creation of a 'leadership group' for Islay following its community consultation earlier in the year.

However, this was not taken forward by Islay Community Council. Lesley Anderson, Manager for Island and Jura Community Voluntary Sector informed the group of the development of their web forum. The link is detailed below:-

<http://www.islay-initiative.org.uk/>

Bob Millar questioned if Transport Scotland should be included as a partner within the LACPG. Charles Reppke would ascertain if they had been invited. Eileen Wilson informed the group that Scottish Water were in the same situation. They were representative at meetings, but not full partners.

Bob Millar enquired on the status of the Caucus of Community Councils. Charles advised that the Caucus had been suggested by Argyll and Bute council. The model had been initiated in the Oban area and had been successful in affording an opportunity to share good ideas/agree matters

of common concern and to ease the burden of attendance for the volunteers who support Community Councils. He continued that Argyll and Bute council were not involved in the meeting process to avoid a perception of undue influence in the work of the Caucus. Furthermore, he recognised, in response to a question, that there were issues with the Association of Community Councils in the local area and Charles also commented on the working group established by Government to look at certain issues in respect of community councils and their membership.

Discussion followed in regards the timetabling of the Agenda and Charles advised the group that Theresa emailed out a request for items for inclusion 6 weeks prior to the meeting. This was to afford Community Councils and partners the opportunity to highlight/inform issues which they wished to discuss at the meeting.

Charles Reppke made the suggestion that perhaps partners could be invited to the meeting to give a presentation/update to the group, with say 2 per meeting. This would spotlight/showcase partners new initiatives, projects, etc and allow an opportunity to let partners lead and shape the discussion on those days. The group welcomed this and it was agreed that Theresa would request this for the next meeting scheduled for March 2012.

8. CONSULTATION DIARY - ARGYLL AND BUTE COUNCIL, IMPROVEMENT AND STRATEGIC HR

Eileen Wilson advised the group that this was on the website.

The Consultation Diary was a means of sharing information. However, it was not being well used and there was the possibility that it would be re-drafted.

9. UPDATES FROM THEMATIC GROUPS

Bob Chicken stated that, in his opinion, the reports were fact free and he questioned the rationale of additional reports not being included. Charles Reppke replied that the additional reports could be viewed on the website and that the reports were signposts to matters which may be of interest to the group..

Eileen Wilson agreed that in future the weblink would be included.

10. ISSUE ON THE TREATMENT OF TARBERT BY TRANSPORT SCOTLAND

Bob Chicken detailed his concerns in regards road safety issues in Tarbert. He stated that an approach had been made to Transport Scotland. However, there had been no progress to date. This issue had already been raised at both the Mid Argyll Partnership and the Kintyre Initiative Working Group meetings.

Jeanette Laughton raised the issue of similar problems in Ardrishaig, where again there was no crossing.

Councillor Kelly reported that the campaign initiated by Argyll First was gaining momentum. To date, it had the backing of 8 MSPs and 1 MP. Support had also been received from Argyll and Bute councillors, local business, road haulage companies and the public.

The Chair congratulated the hard work and effort by Argyll First and advised that representatives from Transport Scotland were coming to the MAKI Area Committee meeting on 1 February 2012.

The group agreed that a special MAKI LACPG should be convened for the 1 February 2012 and that Phil be invited to attend this.

Theresa McLetchie would contact Phil and invite him to the meeting.

The Chair thanked everyone for their attendance and valuable input to the meeting.

This page is intentionally left blank

**MINUTES of MEETING of MID ARGYLL, KINTYRE AND THE ISLANDS LOCAL AREA
COMMUNITY PLANNING GROUP held in the COUNCIL CHAMBERS, KILMORY,
LOCHGILPHEAD, PA31 8RT
on WEDNESDAY, 1 FEBRUARY 2012**

Present:

	(Chair)	
	Councillor Donald MacMillan	
Councillor Rory Colville		Councillor Robin Currie
Councillor Anne Horn		Councillor Douglas Philand
Councillor John Semple		
Charles Reppke		Head of Governance and Law
Phil Hinchliff		Transport Scotland
Andrew Henderson		Transport Scotland
Elizabeth Ball		West Kintyre CC
Jeanette Laughton		Ardrishaig CC
Edward Laughton		Ardrishaig CC

1. APOLOGIES

Apologies for absence were intimated on behalf of the following:-

Councillor Alison Hay
Councillor Donald Kelly
Christina West (NHS Highland)
Eileen Wilson
Jim Martin
Bob Chicken

2. UPDATE FROM TRANSPORT SCOTLAND

The group heard a presentation by Phil Hinchliff and Andrew Henderson, Transport Scotland.

They advised Members that a meeting had been held on 18 January with Tarbert and Skipness Community Council in Tarbert to discuss a pedestrian crossing in Tarbert and changes to the signage at Kilberry Road. Resulting from the meeting, decisions had been made to instigate a study to justify the need for a pedestrian crossing in Tarbert. In addition, Mr Hinchliff had emailed Bob Chicken (Tarbert and Skipness CC) details of proposed new signage for Kilberry Road. A further meeting would be held on 9 February with Tarbert and Skipness CC.

Mr Hinchliff continued that Transport Scotland were in the process of appointing an external consultant who would be tasked with undertaking a review of the A83. Their remit would include:

Trunking - south of Kennacraig
Pinchpoints at - Erines/Ardrishaig/Inveraray
Rest and Be Thankful

Mr Henderson informed the group of a meeting held between Michael Russell MSP, Strathclyde Police, Argyll & Bute Forestry Transport Association and Argyll and Bute Council to discuss the rationale of opening the forestry road at the Rest and Be Thankful. The purpose of which would be to use the road as a diversionary route to be utilised when the A83 was closed due to emergencies. There were however issues to be overcome before the forestry road could be used. These included:-

Narrow track (measures to overcome would include a convoy vehicle leading vehicles 1-way direction)

Debris on track

Previous land slides in the area

Bridge - right-angled bends - which may necessitate a new bridge.

The above would constitute the need for financial injection. The Forestry Transport Association had indicated that they would contribute to these costs.

Mr Hinchliff detailed several forthcoming meetings:-

9 February - Tarbert

21 February - Lochgoilhead (this meeting would primarily discuss the Rest and Be Thankful and Inveraray)

He advised that up-to-date information was available on the Transport Scotland website:-

<http://www.transportscotland.gov.uk/road/maintenance/prioritising-and-maintaining/landslides/A83-rest-and-be-thankful>

Jeanette Laughton, Ardrishaig CC stated that for 6 years the CC had been endeavouring to get traffic calming measures implemented in Ardrishaig. She voiced her concerns at the lack of inability on the part of Transport Scotland to instigate any action or measures to address this problem. Mr Hinchliff replied that neither he nor anyone else in his section had received the previous correspondence. Mr Reppke suggested that Jeanette Laughton forward the said documentation to Theresa McLetchie. She, in turn, would ensure that this was scanned and forwarded onto Mr Hinchliff.

Councillor Philand made the suggestion of holding a joint meeting with Transport Scotland to include both Lochgilphead and Ardrishaig.

Liz Ball enquired if the timescale for the external consultants to undertake the study would be completed before the onset of Winter 2012. Mr Henderson replied that he was optimistic the forestry road would be implemented before then. In the meantime, the sub-contractors who were responsible for the safety netting in place at the Rest and Be Thankful were being retained to maintain this work.

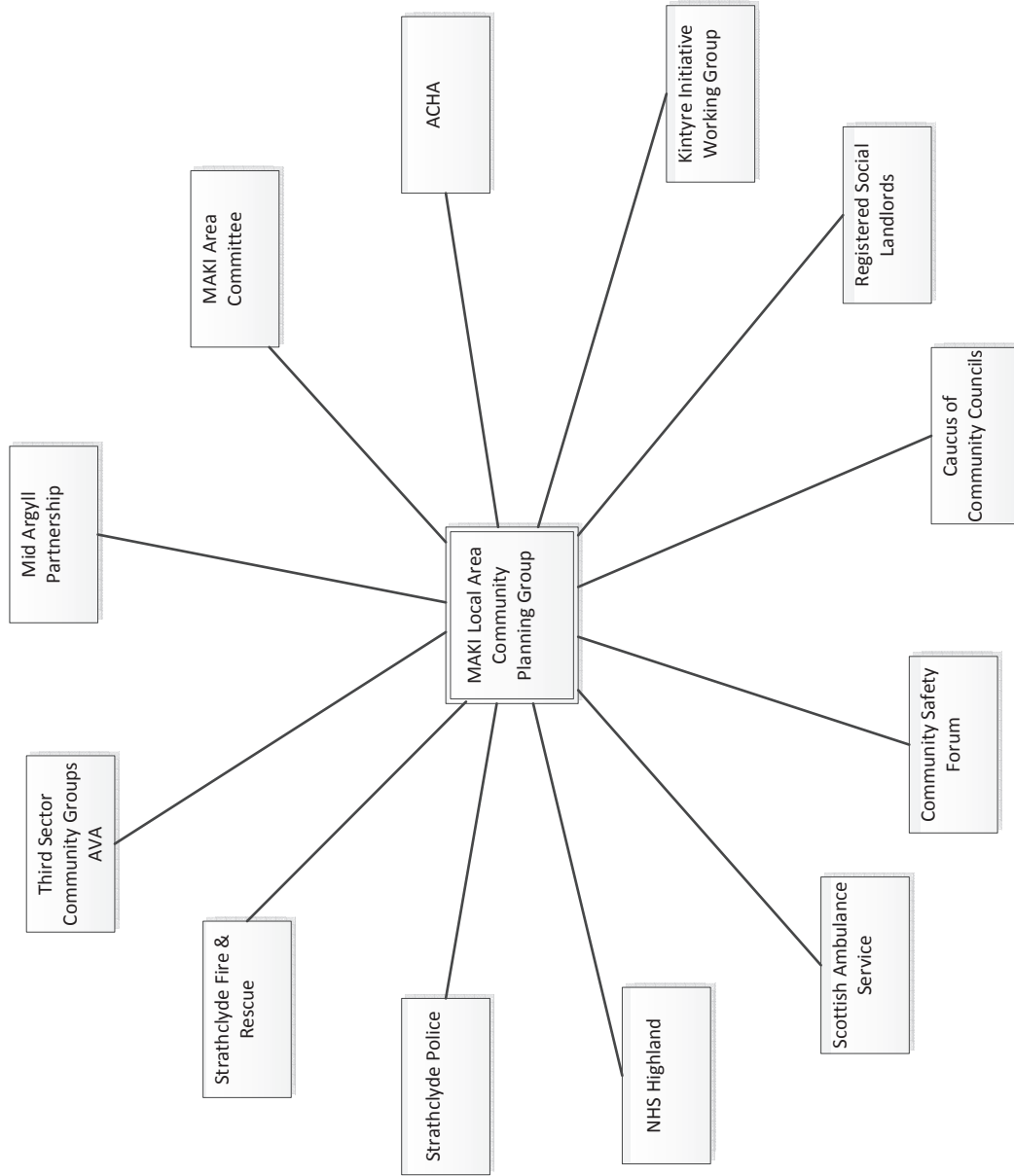
Councillor Currie enquired on the specific brief for the study. Mr Henderson replied that Jamie McGrigor had compiled the list for review.

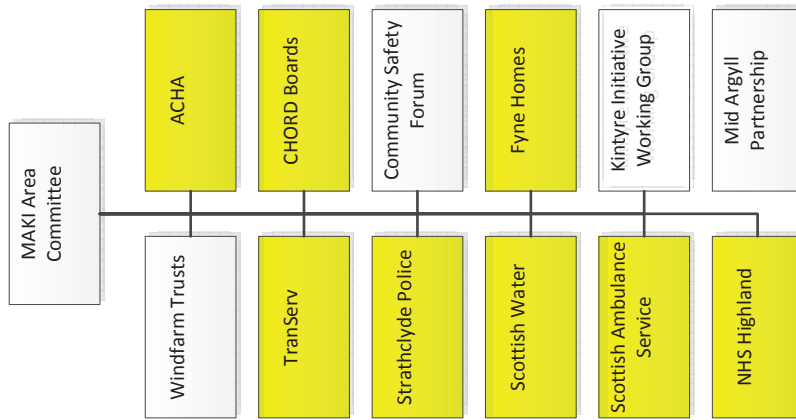
Charles Reppke asked if Ardrishaig could not be included on the said list. Mr Hinchliff agreed that the list would be forwarded to Theresa McLetchie who would distribute to Members. Councillor Philand stated that it was necessary to maintain direct contact with both Mr Hinchliff and Mr Henderson to ensure that issues which had been raised were being addressed.

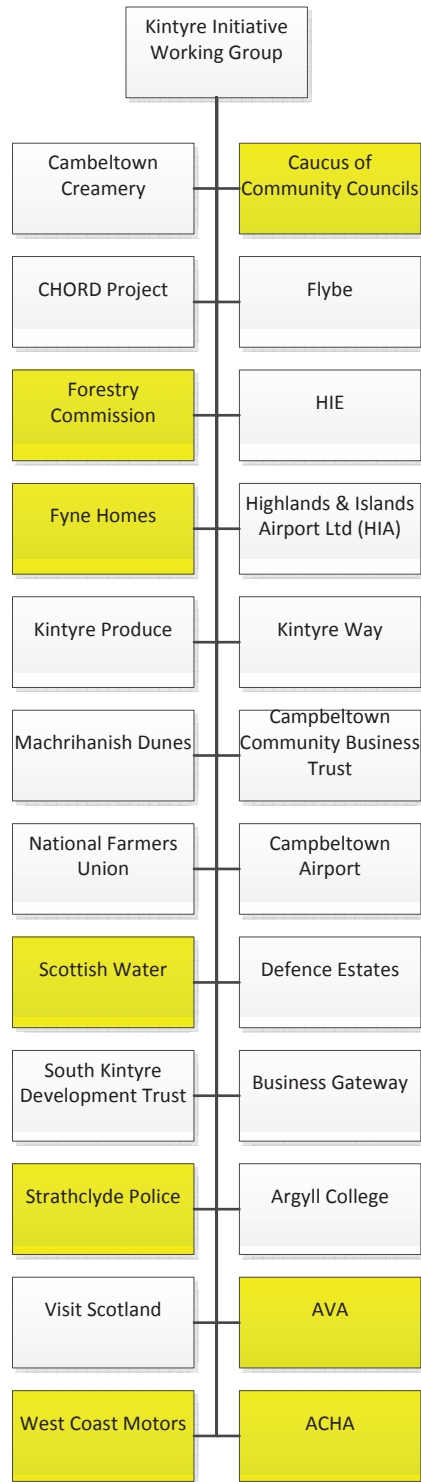
Liz Ball reiterated that it was vital that the local communities south of Tarbert be included in these discussions, as all relied heavily on the A83, including the Trunk road part, for social and business reasons. Cllr Colville replied that at the forthcoming KIWG meeting (24 February) a representative from Transport Scotland would be in attendance and discussion on the A83 could be taken forward to ensure that community councils had an opportunity to contribute to the discussion at that meeting.

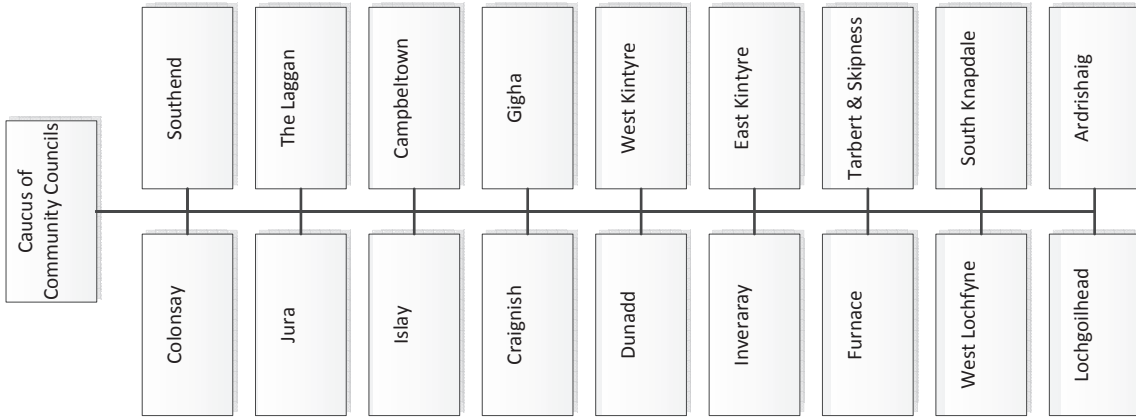
The Chair thanked both Mr Hinchliff and Mr Henderson for their attendance at the meeting and the information they had updated the group on.

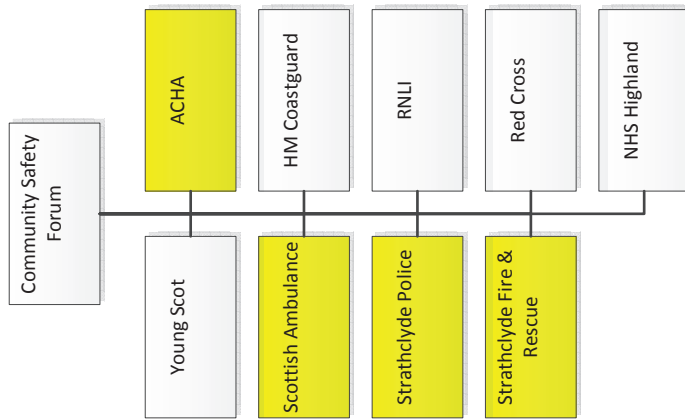
This page is intentionally left blank

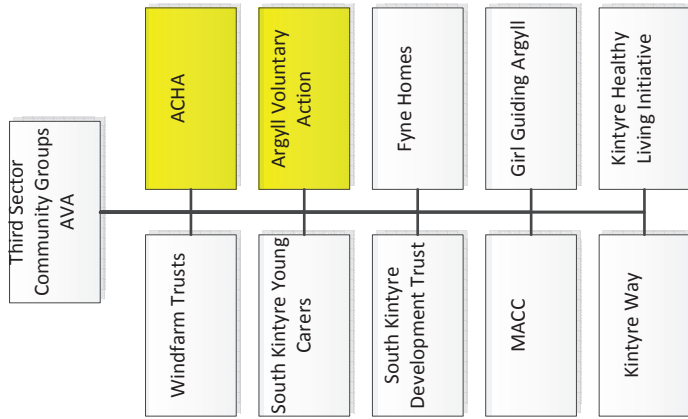


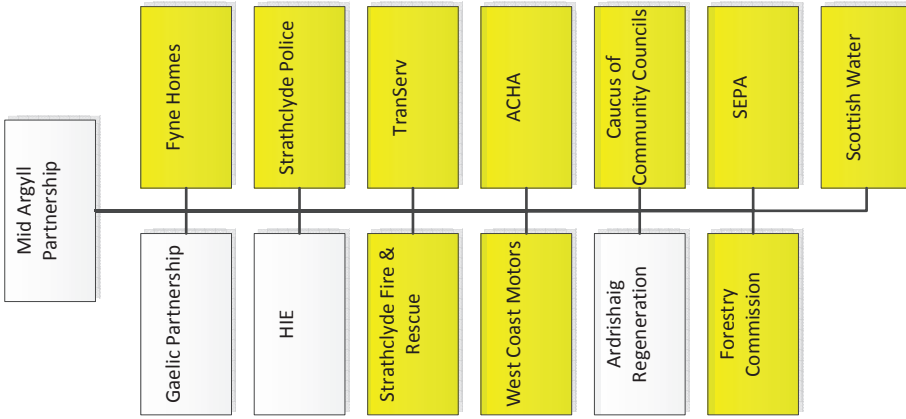












This page is intentionally left blank

CPP Consultation Diary**Information Request - November 2010**

argyll and bute

communityplanningpartnership

Local Area Community Planning Groups are developing local consultation diaries, gathering information about what consultations are currently underway and what consultations are being planned.

The Consultation Diaries will provide an overview of all the consultation being done in Argyll and Bute. This will allow Local Area Community Planning Groups to become more aware of the volume of consultation that are being undertaken by community planning partners. It also means we can access the results of a consultation that might help us plan our work. If we are planning a consultation, we can check the diary to avoid clashing with another consultation. We can also use the diary to make contact with people who have recent experience of consulting to talk over the methods they used and any learning points they can share with us.

We would like to know about

1. **Proposed Consultations** - those planned for the future
2. **Current Consultations** - those consultations that are happening now
 - Local (consultations at LACPG or even more local level)
 - Argyll and Bute Wide
 - Organisational but with potential Argyll and Bute outcomes
3. **Recent Consultations** - those that have happened recently. Even if they have been completed we can add them so that anyone planning a consultation can see if something similar has been conducted recently. It can also indicate if and when a report will be produced and where to get a copy. Any outcomes or changes that have resulted from it can also be highlighted here.

If we are able to get web links for the consultations more detailed information about that consultation could be accessed. If web links can't be established we would look for a brief description of the consultation which should include the name and phone number of someone you can contact for further information or discussion.

If you are organising a consultation, please fill in this form, either electronically or on paper, then email or post the completed form to:- eileen.wilson@argyll-bute.gov.uk

**Eileen Wilson
Community Planning Manager
25 West King Street
Helensburgh
G84 8UW**

Please complete a separate form for each consultation exercise.

**ARGYLL AND BUTE COMMUNITY PLANNING PARTNERSHIP
CONSULTATION DIARY ENTRY**

A. Key Points

A1. Title of consultation

A2. Purpose of consultation

A3. Key contact person for the consultation

Name

Council Service / Partner organisation

Telephone number

Email

A4. Approximate start date (dd/mm/yy) A4. Approximate end date (dd/mm/yy)

A5. Are you carrying out the consultation as part of a statutory process? Yes No

A6. When do you expect to give feedback on the consultation (dd/mm/yy)?

B. Who is consulting?

B1. If you are leading this consultation on behalf of Argyll and Bute Council, please identify the Services within the Council that will be involved in carrying out the consultation (check all that apply).

Chief Executive's Unit

Strategic Finance Improvement and HR

Community Services

Adult Care Education

Children and Families Community and Culture

Development and Infrastructure Services

Roads and Amenity Services Planning and Regulatory Services

Economic Development

Customer Services

Governance and Law Customer and Support Services

Facility Services

B2. Please list any partner organisations / departments involved in carrying out the consultation:

i.

- ii.
- iii.
- iv.
- v.

B3. If you are leading this consultation on behalf of a Community Planning partner organisation or Partnership please list organisations involved in carrying out the consultation:

- i.
- ii.
- iii.
- iv.
- v.

C. Who are you consulting with?

C1. Which of the following groups will you consult with? (Check all that apply.)

- | | | | |
|----------------------------------|--------------------------|--------------------------------|--------------------------|
| Elected Members | <input type="checkbox"/> | Argyll and Bute Youth Forum | <input type="checkbox"/> |
| Council Officers | <input type="checkbox"/> | Young people / youth groups | <input type="checkbox"/> |
| Voluntary groups | <input type="checkbox"/> | General public / residents | <input type="checkbox"/> |
| Community Councils | <input type="checkbox"/> | Community Planning Partnership | <input type="checkbox"/> |
| Community / Local Forums | <input type="checkbox"/> | Community Planning Partners | <input type="checkbox"/> |
| Third Sector Partnership | <input type="checkbox"/> | Parents | <input type="checkbox"/> |
| Disability Network | <input type="checkbox"/> | Parent Councils | <input type="checkbox"/> |
| Elderly Forum | <input type="checkbox"/> | School pupils | <input type="checkbox"/> |
| Citizens' Panel | <input type="checkbox"/> | Pupil Councils | <input type="checkbox"/> |
| User groups | <input type="checkbox"/> | Service users | <input type="checkbox"/> |
| Tenants / Residents Associations | <input type="checkbox"/> | Potential Service Users | <input type="checkbox"/> |
| Other groups (please write in) | | | |

<input type="text"/>	<input type="text"/>
<input type="text"/>	<input type="text"/>
<input type="text"/>	<input type="text"/>

D. How are you carrying out the consultation?

D1. Please indicate which of the following you will use to publicise your consultation. (Check all that apply.)

- | | | | |
|-------------------------|--------------------------|------------------------------------|--------------------------|
| Articles in newsletters | <input type="checkbox"/> | Posters / flyers | <input type="checkbox"/> |
| Information sheets | <input type="checkbox"/> | Presentations | <input type="checkbox"/> |
| Letters | <input type="checkbox"/> | Press release | <input type="checkbox"/> |
| Website | <input type="checkbox"/> | Press advert | <input type="checkbox"/> |
| Libraries | <input type="checkbox"/> | Service points / community centres | <input type="checkbox"/> |
| Other | <input type="checkbox"/> | | |

D2. If you have checked 'other', please give details:

<input type="text"/>

D3. What consultation methods do you intend to use? (Please check all that apply)

- | | | | |
|-------------------------------|--------------------------|---|--------------------------|
| Community visioning | <input type="checkbox"/> | Survey – face to face | <input type="checkbox"/> |
| Customer comment card / slips | <input type="checkbox"/> | Survey – telephone | <input type="checkbox"/> |
| Exhibition | <input type="checkbox"/> | Survey – postal | <input type="checkbox"/> |
| Focus groups / workshops | <input type="checkbox"/> | Survey – online | <input type="checkbox"/> |
| Public meeting(s) | <input type="checkbox"/> | Web-based discussions | <input type="checkbox"/> |
| Participatory appraisal | <input type="checkbox"/> | Individual interviews | <input type="checkbox"/> |
| Circulating documents | <input type="checkbox"/> | Conference | <input type="checkbox"/> |
| Opinion poll | <input type="checkbox"/> | Partnership approach / ongoing dialogue | <input type="checkbox"/> |
| Other (please write in) | | | |

E. Consultation events

E1. Are you planning any events as part of this consultation? Yes No

E2. If you are planning events, please briefly describe their number and types.

Number of planned events	
Type of events	

When you know dates and locations of the events, please give your LACPG contact the details so that these can be entered into the events diary.

F. Geographic areas covered

F1. Which parts of Argyll and Bute will the consultation cover? (Tick all that apply)

- | | | | |
|-------------------------------------|--------------------------|------------------------|--------------------------|
| Argyll and Bute wide | <input type="checkbox"/> | Helensburgh and Lomond | <input type="checkbox"/> |
| Mid Argyll, Kintyre and the Islands | <input type="checkbox"/> | Bute and Cowal | <input type="checkbox"/> |
| Oban, Lorn and the Isles | <input type="checkbox"/> | Other | <input type="checkbox"/> |

F2. If you have said that the consultation will cover 'other' areas, please give details:

G. Feeding back the consultation results

When you have written a final report for the consultation, please send an electronic copy to your LACPG contact(s) for distribution.

Thank you for completing this form.

Please send it to:

eileen.wilson@argyll-bute.gov.uk

Eileen Wilson

Community Planning Manager

25 West King Street

Helensburgh

G84 8UW

This page is intentionally left blank